



2019 Oil & Gas Project Management Conference

P & J Live Aberdeen

Thursday 7th November 2019





Next Generation Project Delivery



Richard Haydock

Director Modernisation & Transformation, BP Global Projects Organisation



BP at a glance



78

countries



73,000

employees



\$12.7bn

underlying
replacement cost
profit



63,000 km²

new exploration access



18,700

retail sites



3.7

million barrels of oil
equivalent per day –
hydrocarbon
production

Our strategy



Growing advantaged oil and gas in the upstream

Invest in more oil and gas, producing both with increasing efficiency.



Market-led growth in the downstream

Innovate with advanced products and strategic partnerships.



Venturing and low carbon across multiple fronts

Pursue new opportunities to meet evolving technology, consumer and policy trends.



Modernizing the whole group

Simplify our processes and enhance our productivity through digital solutions.

Sustainably improving safety, performance & feel

Agility



“Transforming and simplifying the way we work”

Digital



“Transforming how we deliver - Digitizing and automating our operations”

Mindset



“Transforming the way we think”

Improving Safety, Environment & Performance



Improving Employee Experience



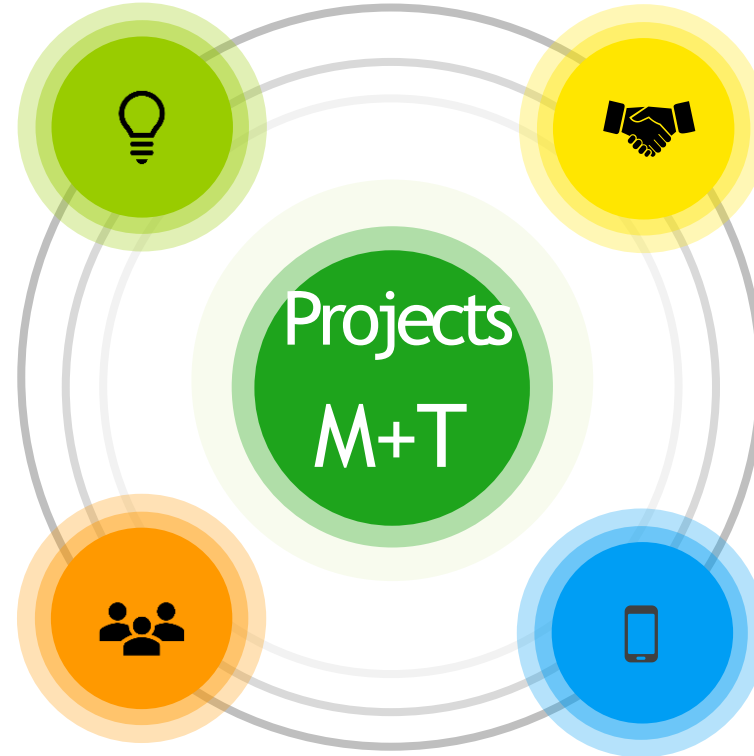
BP Projects M+T themes

Next Generation
Concepts

Collaborative Project
Delivery

Mindset and
Agility

Digital Project
Delivery



Introduction to Digital Performance Management



Our challenge

- Project data comes from multiple sources and can be hard to keep track of
- The longer it takes to access the information you need and respond to problems, the greater the chance of your project being delayed
- This can lead to poor decision making, increased errors and increased costs



Our solution

- System of insight that puts all project performance reporting in one place
- Real time performance data, sourced from BP to contractor systems
- Standardised way of working across all projects to enable data to be visualised from delivery line, project, region and global portfolio view



HSSE



SCHEDULE



Metric	Planned	Actual/Forecast	?
Overall % (Execute)	97.5	93.5	↓
Operational Readiness	92.7	82.6	↓



COST

Current Forecast	Previous Forecast
\$238.1M	\$238.1M
VOWD	Remaining Spend
\$205.3M	\$32.8M

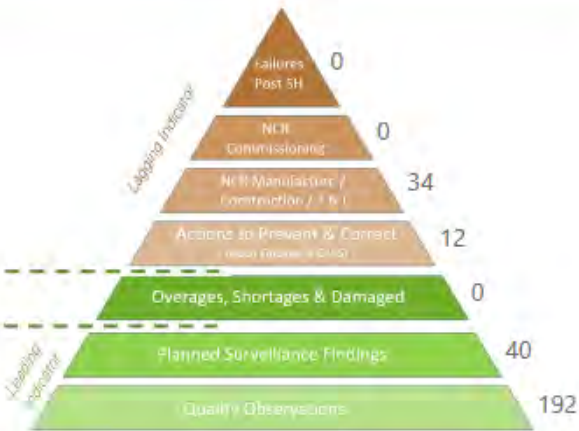


PEOPLE

Baseline	Actual	Forecast
86	70	77
Variance	Upcoming Vacancies (Next 3M)	
7	3	



QUALITY



MOC

Proposed	Open
1	0
Appr. for Imp.	Overdue
2	0
Open Actions	Overdue Actions
4	0



ACTIONS

Event Category	Open	Overdue
Orange Book	0	0
Other	17	2
VAP	9	2
Total	26	4



RISK

Active	Proposed	Overdue
12	0	0
Open Actions	Overdue Actions	
0	0	



DOC STATUS



ETPDR



TQ



INTERFACES

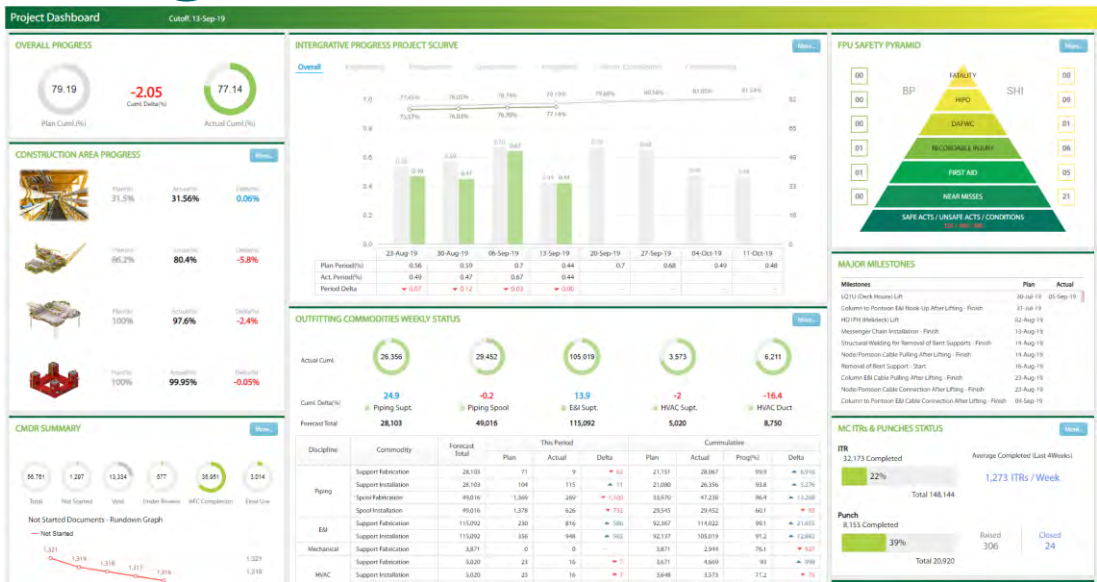


CDR

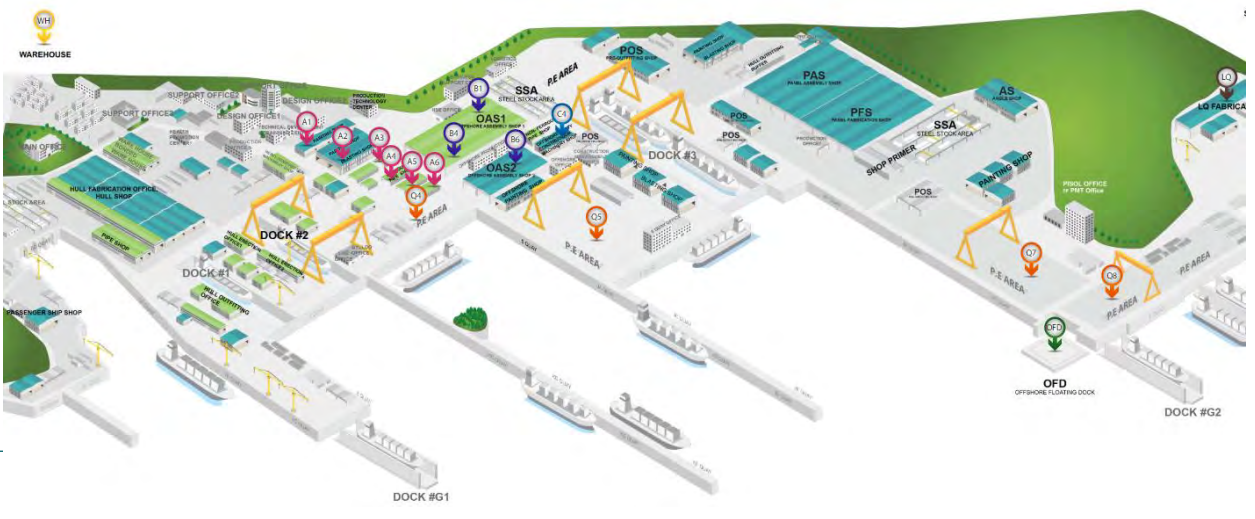
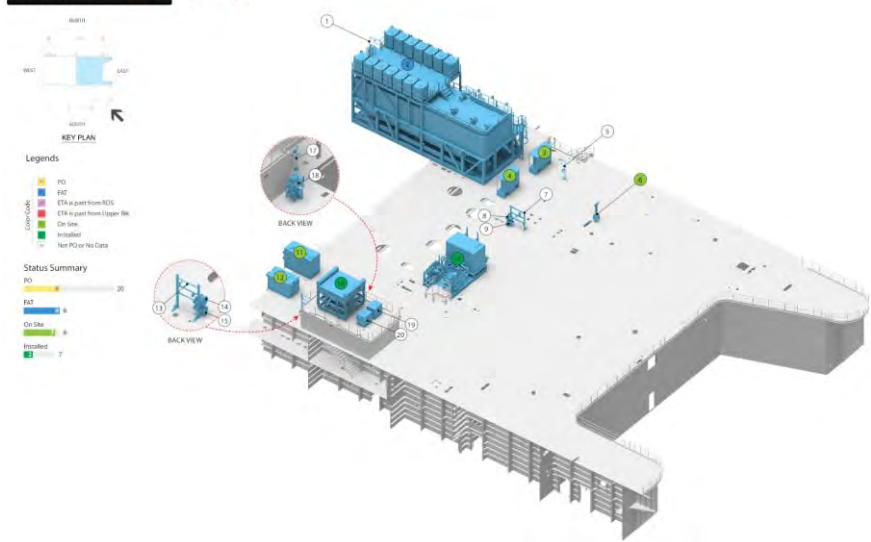


NEDR

Digitisation of Construction



E10UH Main Deck



Robotic Process Automation (RPA) in Global Projects



WHAT IS RPA?

- RPA is the use of software code (Bots) to perform simple tasks using different applications just as a human would do
- Bots run on BP servers with their own NTid credentials
- Bots can read graphical info to make basic decisions
- Bots free up valuable staff time performing low-value, repetitive, rule-based tasks
- Bots report via email the errors they encounter
- Bots are easily re-configured to respond to evolving needs

HOW IS GPO USING BOTS?

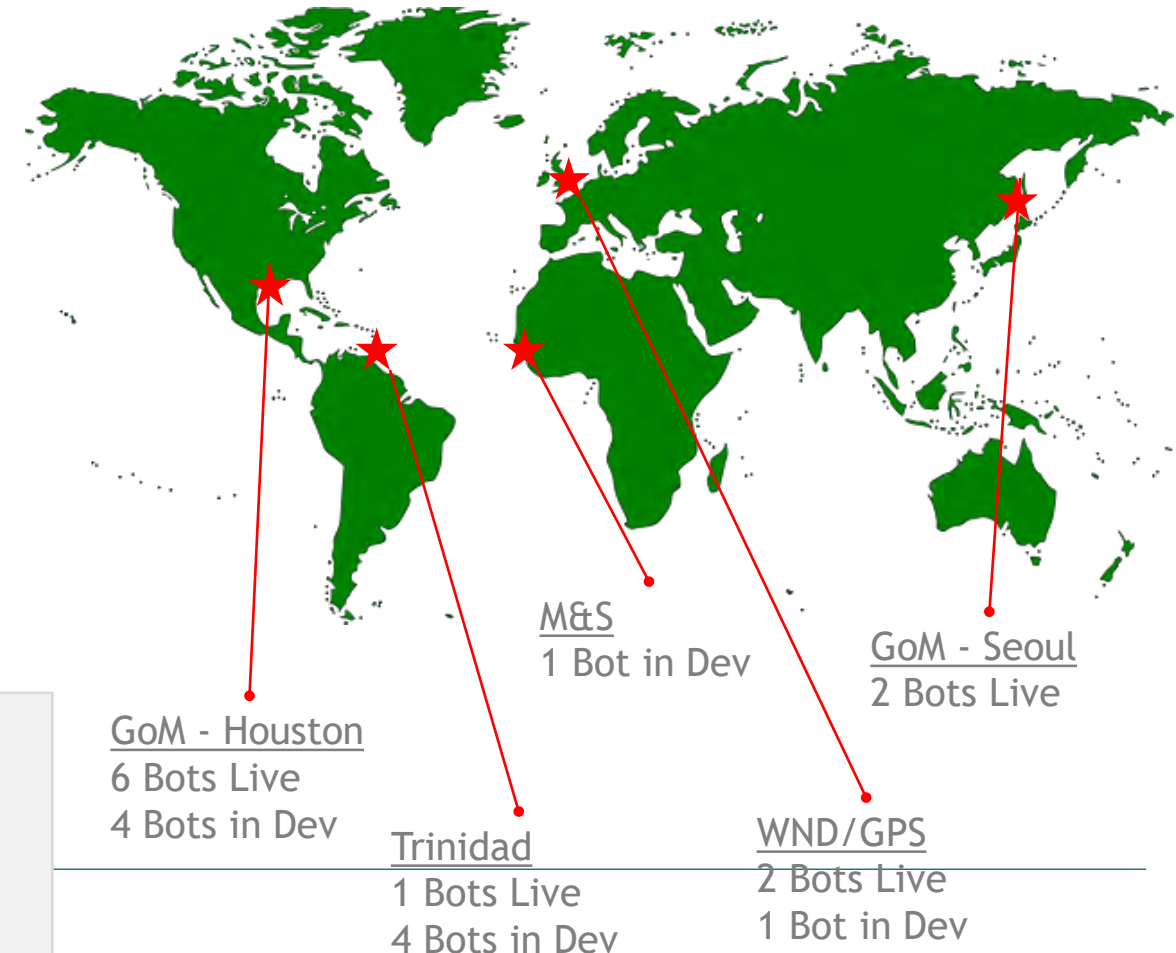
- GPO has developed 4 Bots to date, serving the PIMS discipline
- GPO has or is deploying these Bots to 9 GPO projects in 3 regions and 1 function (19 unique Bot instances in all)
- As use in GPO grows, cost per Bot is reduced

Nov 2018 first GPO
Bot went live.
Results as of
September, 2019:

55k
Hours
of productivity

300k
Documents
processed

WHERE IS BP DEPLOYING BOTS?



Our purpose

Set up as one of 6 digital M&T GPO initiatives, the Project Delivery Environment (PDE) is an 'out of the box' PLM web-based software solution enabling delivery of BP capital projects that will fully integrate with existing BP legacy tools. It will create the foundation of future capital projects delivery by digitalizing the Major Projects Common Process (MPcp v5), mapping our GPO processes into workflows and incorporating data-based management of the requirements from the GPO practices, procedures and guides, allowing real-time self-verification. In doing so, the PDE will enable GPO to move from using document-based work processes to a more streamlined data-centric workflow.

Our scope of work for 2018 is to configure the PDE into a sustainable minimum viable product (MVP) that we can then deploy on a real 'sponsor' project. The MVP will concentrate on digitalizing some of the MPcp v5 workflows for the BP deliverables in four functional areas, namely; project management, project services, major project operations and engineering. This will make use of a subset of the PLM capabilities, namely; workflow automation, requirements management, document management, reporting and schedule integration with Primavera P6.

Adding value to existing project delivery practices

- ✓ Improvement in consistency and quality of project workflow
- ✓ Standardisation and cross-project sharing of processes and templates
- ✓ Data centric systems engineering and requirements management
- ✓ Vastly improved information management, visualisation and access
- ✓ Quality improvements in how we deliver against MPcp requirements
- ✓ Semi-automated verification of deliverables against requirements

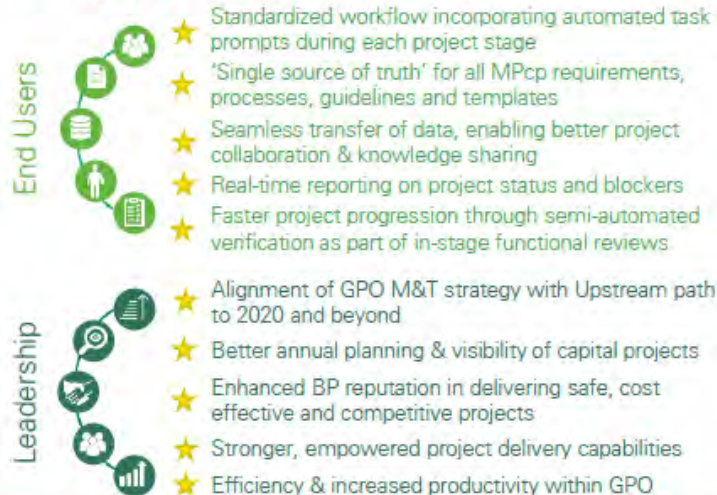
Key benefits to end users and leadership

MPcp (As Is)



- Siloed working
- Heavily manual processes
- Varying working practices
- Multiple data repositories & systems
- Additional effort to collate data for reporting
- Resource intensive project handover & execution

MPcp digitalized in PDE (To Be)



How can you learn more?

For more information or to get involved, please contact:

Why this project?

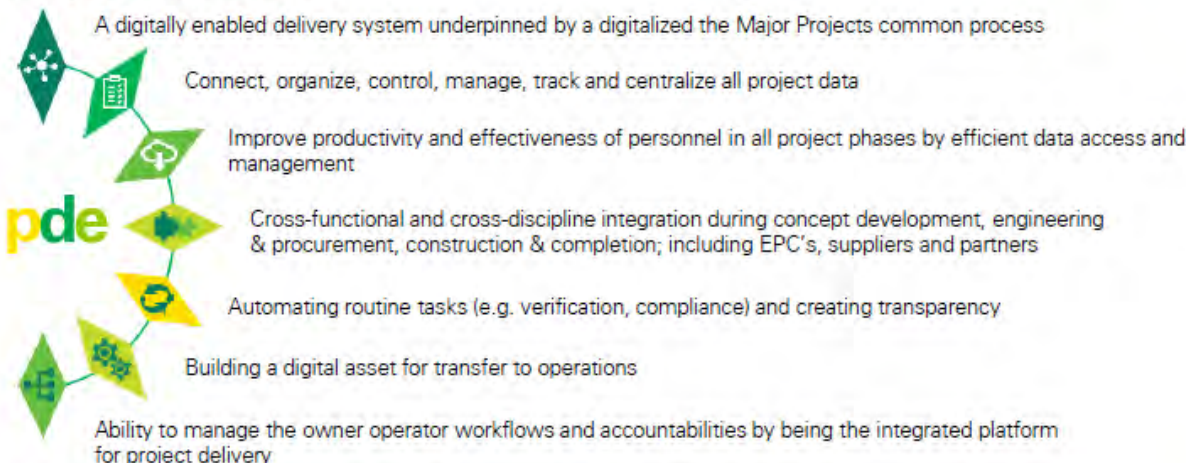
The M&T agenda is designed to systematically enhance several areas within GPO and the wider organisation aligned with our path to 2020 and has identified PDE as one of its key initiatives. By pursuing new digital ways of working, we will be able to break down existing silos through integrated workflows, drive faster decision making and reduce working capital and cycle times. This means improved overall capital performance, schedule quality and highly reliable assets delivered to GOO.

PDE will provide all these benefits, enabling teams to work faster, more efficiently and effectively in a highly predictable way to ultimately deliver safe, cost effective & competitive projects aligned with the Major Projects common process in GPO.

Who is impacted?

All BP teams either delivering, governing or providing input into capital projects in GPO.

Project Objectives



High level project timeline

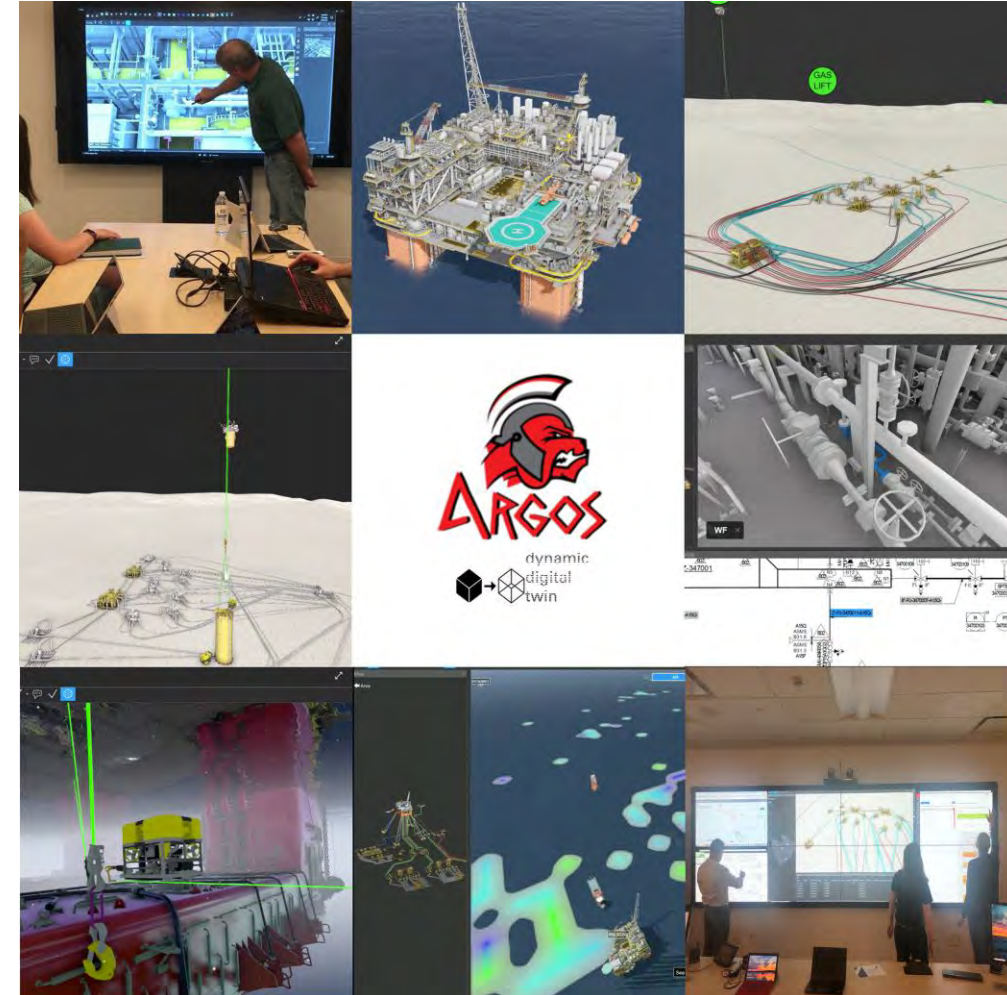


Dickon Parnell (PDE deployment lead)
Tushar Patel (PDE project manager)

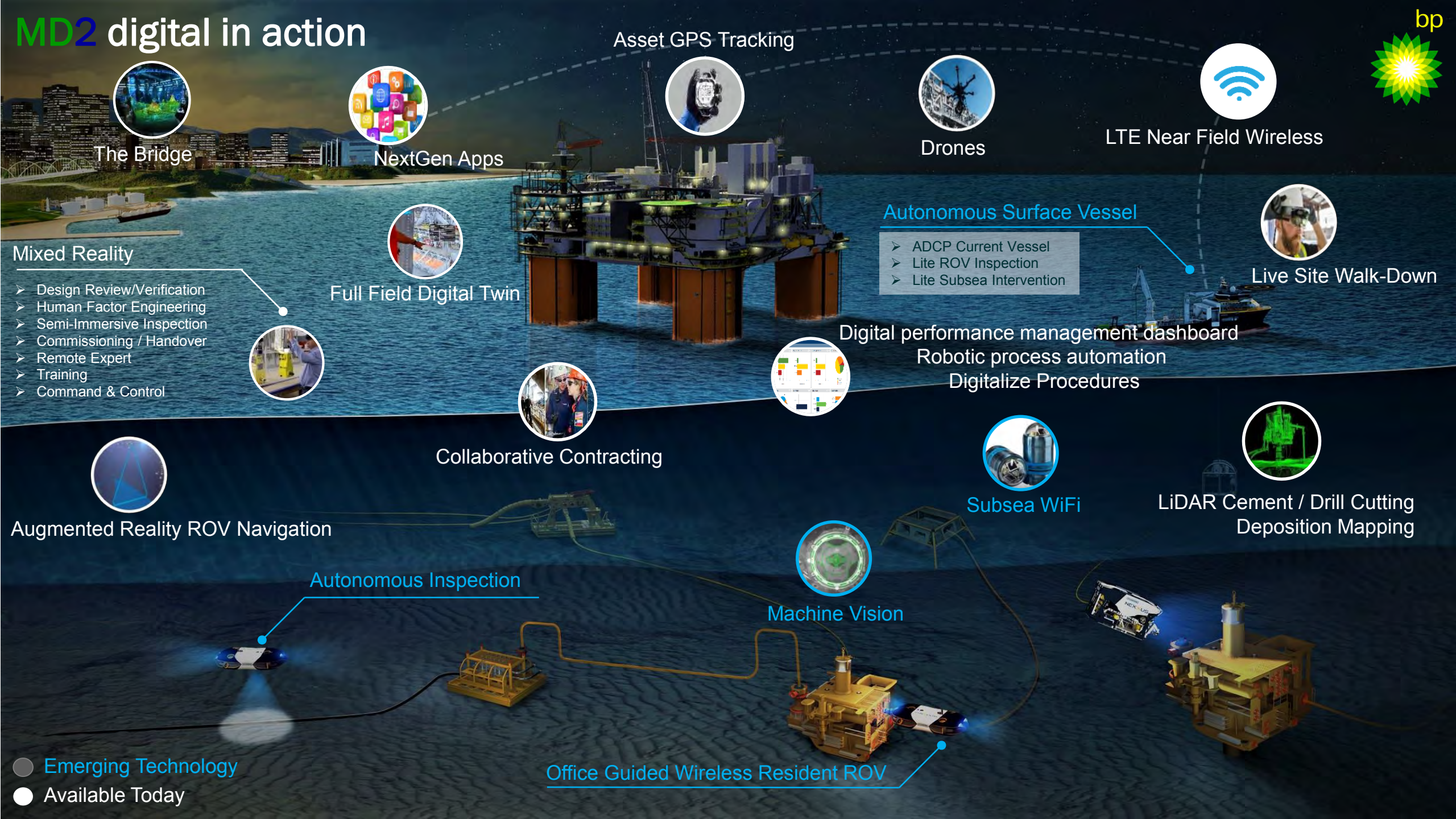
Parneld@bp.com
Tushar.Patel2@uk.bp.com

Digital Twin

- BP projects now deploy digital twin technology
- Combination of Engineering models, visualisation technology & data feeds
- AR & VR use cases in place
- Fully connected models with facilities, subsea, wells & reservoir
- Campaign rooms designed around this technology
- Operational use cases bring in predictive analytics, operating condition and photogrammetry



MD2 digital in action



Thank You

